

MAZDA MX-5

ZOOM-ZOOM



Features.

	MX-5	MX-5 SE		MX-5	MX-5 SE
Transmission					
6-speed manual	✓	✓	Cloth 'sports' bucket seats and door inserts	✓	✓
4-speed automatic	opt	-	Leather 'sports' bucket seats	-	opt
Exterior					
Alloy wheels	✓	✓	Front seats with: rake and slide adjustment	✓	✓
Soft top with glass rear window and electric demister	✓	✓	integral head restraints	✓	✓
Detachable hard top with electric demister	opt	opt	passenger's side seat back pocket	✓	✓
Body coloured power mirrors, front and rear bumpers	✓	✓	Leather-wrapped steering wheel	✓	✓
Power windows and aerial	✓	✓	Leather-wrapped gear shift knob (manual transmission only)	✓	✓
Front and rear bumper skirts and rear boot spoiler	-	✓	Leather-wrapped handbrake handle	-	✓
Coloured brake calipers	-	✓	Stainless steel scuff plates	-	✓
Chrome exhaust extension	✓	✓	Drilled aluminium pedals and footrest	-	✓
Front suspension strut tower brace bar (manual transmission only)	✓	✓	Door pockets and lockable glove box	✓	✓
Instrumentation					
Tachometer, temperature gauge and electronic odometer	✓	✓	Driver's side vanity mirror	✓	✓
Low fuel warning light and oil pressure gauge	✓	✓	Remote boot and fuel releases housed in lockable centre console	✓	✓
Critical function warning lights/chimes	✓	✓	'Windblocker' aero board	✓	✓
Lights					
Halogen headlamps	✓	✓	Driver's left footrest	✓	✓
Front fog-lamps	✓	✓	Cupholders	✓	✓
Interior dome lamp	✓	✓	Safety and Theft Prevention		
Cargo room lamp	✓	✓	Anti-lock Braking System (ABS)	✓	✓
Instrument panel light dimmer	✓	✓	Torque-sensing Limited-Slip Differential (LSD)	-	✓
Interior					
Audio system with: AM/FM digital tuner	✓	✓	Front SRS airbags (driver and passenger)	✓	✓
CD player, single disc	✓	-	3 point ELR seat belts with pre-tensioners and load-limiters	✓	✓
CD player, in-dash 6-disc	-	✓	Collapsible steering column	✓	✓
speakers, number of	6	6	Driver's power window - one touch (down only)	✓	✓
Digital clock inc. in audio system	✓	✓	Remote operated central locking and boot release (2 transmitters)	✓	✓
Front 2-speed wipers with intermittent function	✓	✓	Engine immobiliser	✓	✓
			Day/night rear vision mirror	✓	✓
			High backed bucket seats	✓	✓
			High mount stop lamp	✓	✓
			Side impact door beams	✓	✓
			Front and rear crumple zones	✓	✓

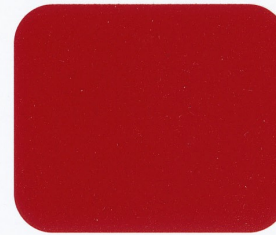
		MX-5	MX-5 SE
Engine			
Engine type		1.8 litre 4 cylinder in-line 16V DOHC with Sequential Valve Timing (S-VT)	1.8 litre 4 cylinder in-line 16V DOHC with intercooled turbocharger
Engine capacity	cc	1,839	
Bore and stroke	mm	83.0 x 85.0	
Compression ratio		10.0 : 1	9.5 : 1
Maximum power	man	kW	107 @ 7,000rpm
	auto	kW	102 @ 6,500rpm
Maximum torque	man	Nm	168 @ 5,000rpm
	auto	Nm	170 @ 5,000rpm
Fuel system		Electronic fuel injection with knock sensor	
Fuel tank capacity	litres	48	
Fuel consumption (combined l/100km)			
	man	8.9	9.1
	auto	9.5	-
Recommended fuel		Premium unleaded	
Transmission Ratios			
1st	man/auto	3.760 / 2.450	3.760
2nd		2.269 / 1.450	2.269
3rd		1.645 / 1.000	1.645
4th		1.257 / 0.730	1.258
5th		1.000 / -	1.000
6th		0.843 / -	0.843
Reverse		3.564 / 2.222	3.564
Final drive		3.636 / 4.100	3.636

		MX-5	MX-5 SE
Chassis and Suspension			
Brake type	front	Ventilated disc	
	rear	Solid disc	
Suspension	front & rear	Independent double wishbone with coil springs, cylindrical double acting shock absorbers (Bilstein on SE model) and torsion bar stabilisers	
Steering		Power assisted (engine revolution sensing) rack and pinion	
Turning circle	kerb to kerb	m	9.2
			10.4
Tyres	man	205/45R16 83W	205/40R17 80W
	auto	195/50R15 82V	-
Wheels	man	16 x 6.5 J (alloy)	17 x 7.0 J (alloy)
	auto	15 x 6.0 JJ (alloy)	-
Spare tyre/wheel		Space saver	
Dimensions			
Overall length	mm	3,975	3,983
Overall width	mm	1,680	
Overall height	mm	1,225	
Wheelbase	mm	2,265	
Ground clearance	unladen	mm	130
Track	front	mm	1,415
	rear	mm	1,440
Kerb weight	man	kg	1,086
	auto	kg	1,081
			-

For further information visit mazda.com.au or Freecall 1800 034 411.

Specifications.

Mazda MX-5 colours.



Classic Red ●



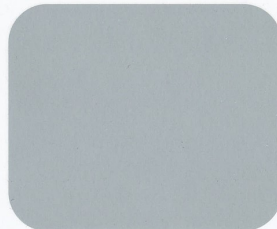
Pure White ●



Radiant Ebony ●



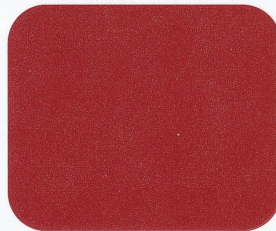
Titanium Grey ●▲



Sunlight Silver ●▲



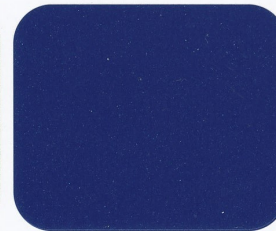
Brilliant Black ●



Velocity Red ▲



Grace Green ●



Strato Blue ●

● MX-5 ▲ MX-5 SE

Fuel consumption figures are based on ADR 81/01 test results. They are useful in comparing the fuel consumption of different vehicles. They may not be the fuel consumption achieved in practice. This will depend on traffic and road conditions and how the vehicle is driven. All care is taken to ensure the accuracy of this brochure at the time of publication. Specifications, features and model availability may vary from State to State and may change without notice. Please refer to mazda.com.au or consult your Mazda Dealer prior to placing an order to ascertain current information on model availability, specifications, options, features and prices. Mazda Australia Pty Limited will not be liable for any loss arising from the information in this brochure, whether in negligence or otherwise. Mazda Australia Pty Limited ABN 78 004 690 804, 385 Ferntree Gully Road, Mount Waverley, Victoria, 3149. Mazda 3 year Unlimited Kilometre Warranty and 6 year Panel Protection Warranty is available on all Mazda passenger vehicles and Tribute 4WD. Please refer to your dealer. Due to the nature of the printing process, colours may vary from those shown in this brochure. Ask your dealer to show you a product sample. Published February 2004. MAZ6217.

